

Wildlife Biologist

Wildlife biologists study animals in the wild: how they act, where they live, and how they interact with people.

A wildlife biologist might discover what is causing a sickness that affects honeybees or create a plan for keeping deer away from airport runways.



Your Project

Design a feeding station for hummingbirds to replace their missing food plant.

- Notice how the hummingbird feeds
- Decide what parts are important for your feeding station
- Build a model of your feeding station design

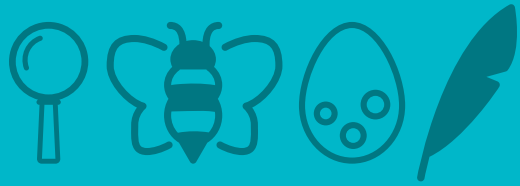


Hummingbird Information



- Body: 2 inches (5 centimeters) long
- Beak: 4–5 inches (8–10 cm) long
- Drinks nectar from flowers using a long tongue
- Feeds from only a few kinds of plant. The plants all:
 - Are vines that climb up trees and bushes
 - Have flowers that are 4–5 inches (8–10 cm) long





Draw some ideas for your feeding station

What does your final feeding station look like?

Blank drawing area with a pencil icon in the top left corner and a large, faint pencil graphic at the bottom.

Blank drawing area with a pencil icon in the top left corner.

Reflect

How were you like a wildlife biologist? What skills did you practice?

Reflection area with a pencil icon in the top left and two dashed circles containing the text "PLACE STICKERS HERE".